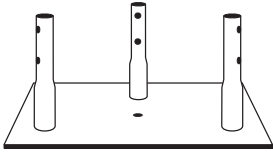




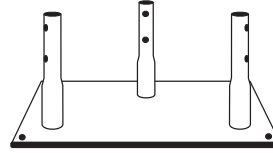
PARTS & ACCESSORIES



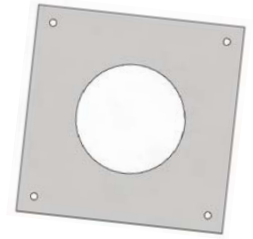
CONCRETE BASE PLATE FOR GUYED & BRACKETED TOWERS BPC25G\* FOR USE WITH 3/4X12PP PIER PIN EMBEDDED IN CONCRETE. CONCRETE BASE PLATE IS TO BE USED FOR BRACKETED AND GUYED APPLICATIONS ONLY.



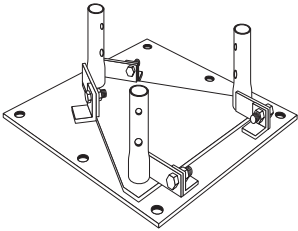
PIER PIN 3/4X12PP FOR USE WITH BPC25G EMBEDDED IN CONCRETE. PIER PIN MUST BE ORDERED SEPARATELY, UNLESS BEING PURCHASED AS PART OF A COMPLETE TOWER KIT.



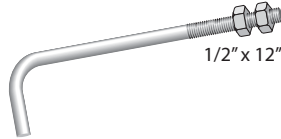
CONCRETE BASE PLATE FOR SELF-SUPPORTING TOWERS 25GSSB FOR USE WITH 5/8" x 12" (P/N: 260145G) BASE BOLTS (ORDERED SEPARATELY) IN SELF-SUPPORTING 25G TOWER APPLICATIONS.



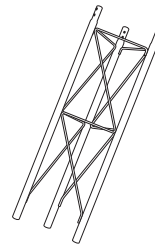
BASE BOLT & TEMPLATE KH8175A 5/8" x 12" FOR USE WITH 25GSSB IN SELF-SUPPORTING 25G TOWER APPLICATIONS. KIT INCLUDES (1) TEMPLATE & (4) BASE BOLTS.



HINGED BASE PLATE BPH25G\* FOR USE WITH 1/2X12BB BASE BOLTS (ORDERED SEPARATELY). HINGED TO ALLOW TOWER TO BE ROTATED UP FROM BASE DURING INSTALLATION. HINGED BASE PLATE IS TO BE USED FOR BRACKETED AND GUYED APPLICATIONS ONLY.

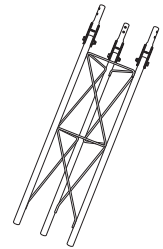


BASE BOLTS 1/2X12BB FOR USE WITH BPH 25G (6) REQUIRED, ORDERED SEPARATELY.



3'4" SHORT BASE SB25G 5' SHORT BASE SB25G5

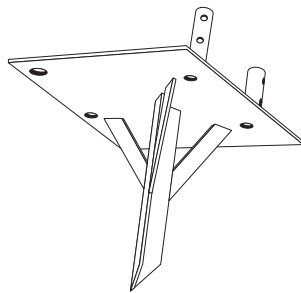
FOR EMBEDMENT IN CONCRETE.



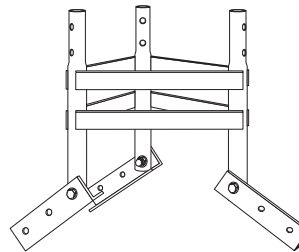
3'4" HINGED SHORT BASE SBH25G\* FOR EMBEDMENT IN CONCRETE.



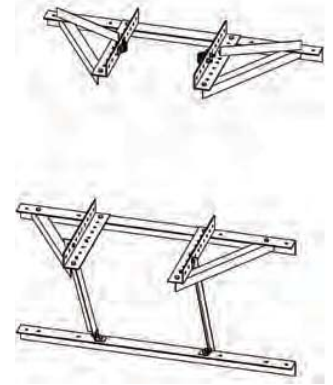
TAPERED BASE 25TG\* CAN BE USED WITH A4197L BASE INSULATOR OR WITH 3/4x12PP, ORDERED SEPARATELY.



SINGLE DRIVE-IN BASE SDB25G\* TO BE DRIVEN DIRECTLY INTO GROUND.



PEAK ROOF MOUNT PR25G\* ADJUSTABLE HINGED FEET CONFORM TO NEARLY ANY ROOF PITCH. BOLTS TO ROOF SURFACE.



WALL MOUNT 25GWM INCLUDES BASE PLATE TO MOUNT 25G SECTION.

\* TOWERS MOUNTED ON THESE BASES MUST BE BRACKETED OR GUYED AT ALL TIMES. TEMPORARY STEEL GUYING MAY ALSO BE NECESSARY DURING INSTALLATION AND DISMANTLING.